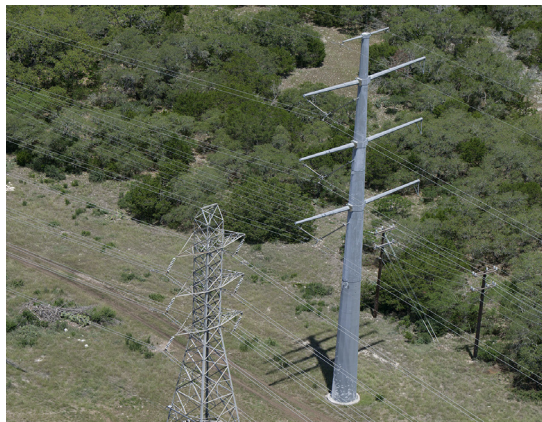


Who is CPS Energy?

Established in 1860, we are the nation's largest public power, natural gas and electric company, providing safe, reliable, and competitively-priced service to **840,750** electric and **352,585** natural gas customers in San Antonio and portions of seven adjoining counties. Our customers' combined energy bills rank among the lowest of the nation's 20 largest cities – while generating **\$7 billion** in revenue for the City of San Antonio for more than seven decades.

As a trusted and strong Community partner, we continuously focus on job creation, economic development and educational investment. True to our **People First** philosophy, we are powered by our skilled workforce, whose commitment to the community is demonstrated through our employees' volunteerism in giving back to our city and programs aimed at bringing value to our customers.

We are among the top public power wind energy buyers in the nation and number one in Texas for solar generation. For more information, visit **cpsenergy.com**.



How can you follow the progress of this project?

The CPS Energy project team will post project information on the CPS Energy website at www.cpsenergy.com. (search: Southton)

Who can answer your questions?

The website will include regular updates on the project as steps are completed.

Also, you may call, write or e-mail to:

CPS Energy

Baselio Rocha, Project Manager
Southton Substation &
Transmission Line Project

Mail Code 100311

P.O. Box 1771

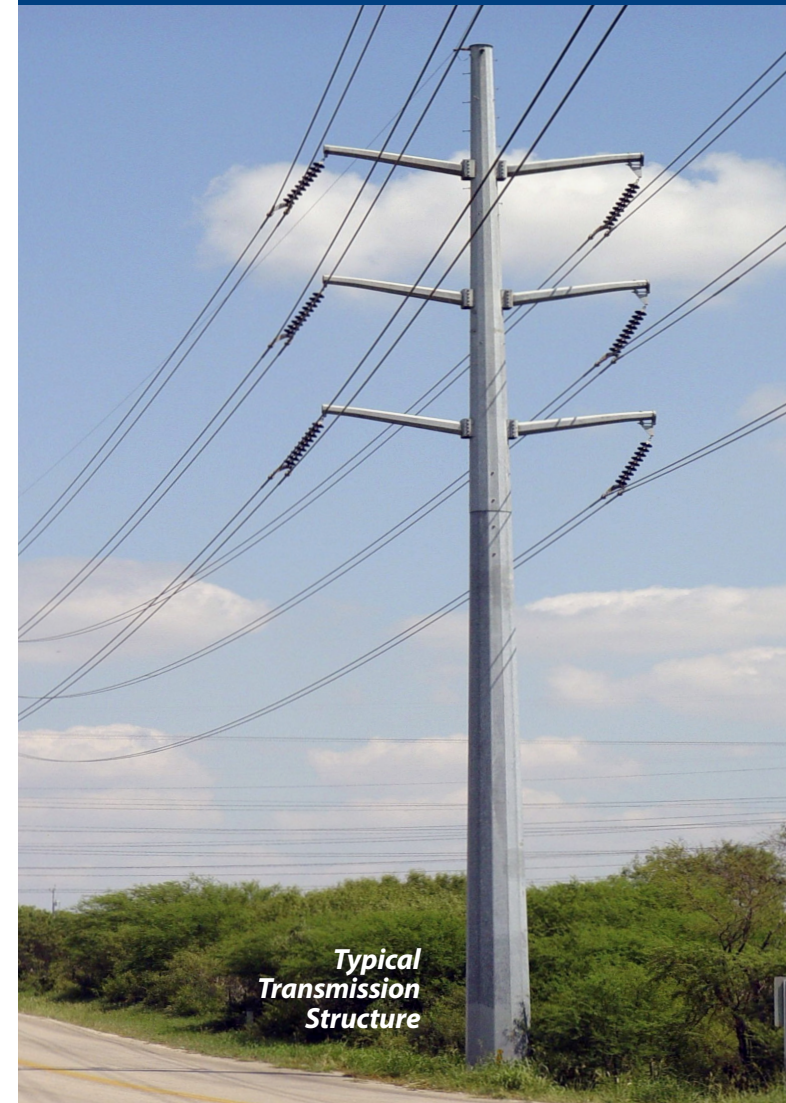
San Antonio, Texas 78296-1771

(210) 353-4933

bdrocha@cpsenergy.com



SOUTHTON SUBSTATION AND TRANSMISSION LINE PROJECT



INFORMATION ABOUT THE SOUTHTON SUBSTATION & TRANSMISSION LINE PROJECT

What is the Southton Substation & Transmission Line Project?

CPS Energy is constructing a new electric substation and high-voltage transmission line in the southeast area of San Antonio near Southton Rd and Loop 410 and I-37.

A substation is a local power hub or distribution point for electricity. This substation will improve reliability and provide additional electric capacity to homes and businesses in the area. The substation will be supplied from a new extension of an existing high-voltage transmission line illustrated in the **Project Area** map shown.

The substation requires approximately 6 acres; the transmission right of way will be approximately 100 feet wide.

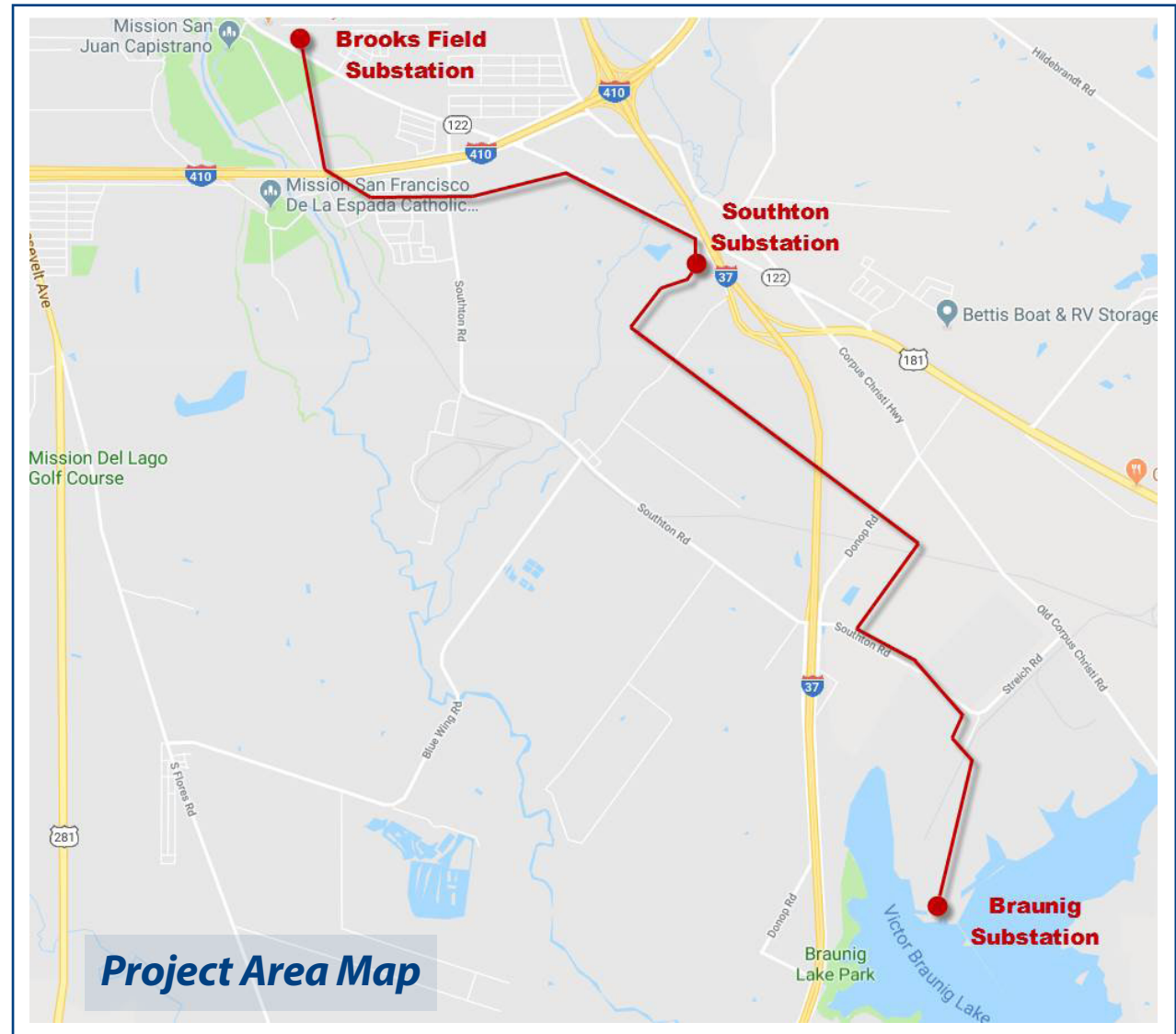
- **Substation construction began in early 2018.**
- **Transmission line construction is expected to begin May 2019.**
- **Scheduled completion date is January, 2020.**

How might this project affect you?

The construction activities will be focused around the areas identified on the study area map. We will strive to minimize disruption to landowners and their properties. Work related power outages to our customers are not expected.

Why is this project needed?

Maintaining our customers' need for reliable electric power is of the utmost importance. This project will improve the quality and safety of an aging transmission line and help ensure electric reliability to this area.



Typical Substation

